



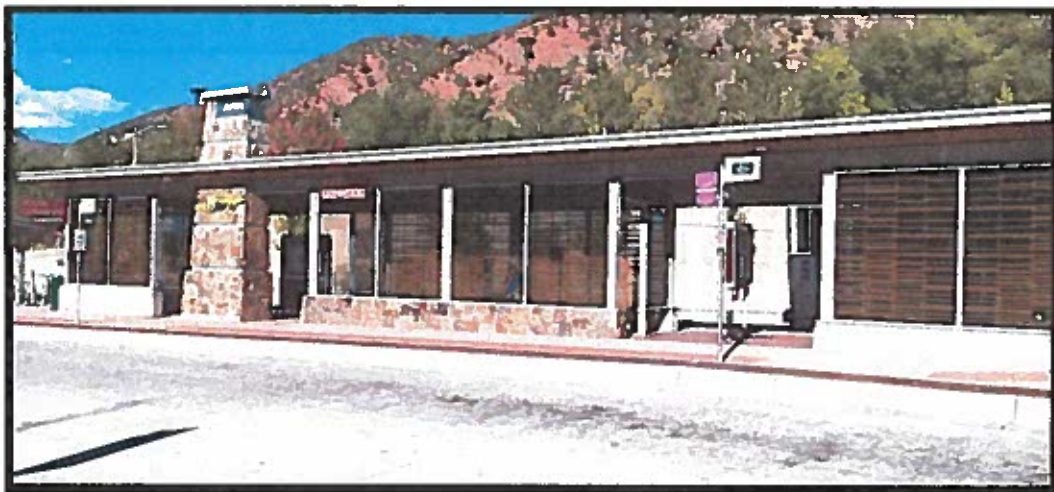
West Line



Fall 2016



Bustang ADA Survey Checklist



Location: South Glenwood BRT Station

Date: September 29, 2016

Survey Conducted By: Patrick Going, ADA Consultant

<i>Parking & Drop-Off Area</i> No Parking Specifically for Bustang Provided	-	-
--	---	---

COMMENTS: Only parking available is on an upper parking deck or on-street

<i>Exterior Path-of-Travel to Bustang Loading Area</i>	YES	NO
<i>Is the walkway to the bus loading area paved, relatively flat, and free of abrupt edges or breaks in the surface? See pictures</i>	X	
<i>Are all curbs along walkway ramped?</i>	X	
<i>Are stairs or steps along the walkway either ramped or have alternative means of access (e.g. elevator)?</i>	X	

Is the walkway/hallway 36" minimum width and free of protrusions or overhanging obstacles? See pictures	X	
--	----------	--

COMMENTS: It is NOT readily apparent where the Bustang loading area is. See pictures. This sign for Bustang is only about 14" x 18".

<i>Bustang Bus Waiting Shelter</i>	YES	NO
Is the shelter on an accessible route with adequate clearance to enter and accessible benches (if provided). Good shelters, benches, and general waiting area.	X	

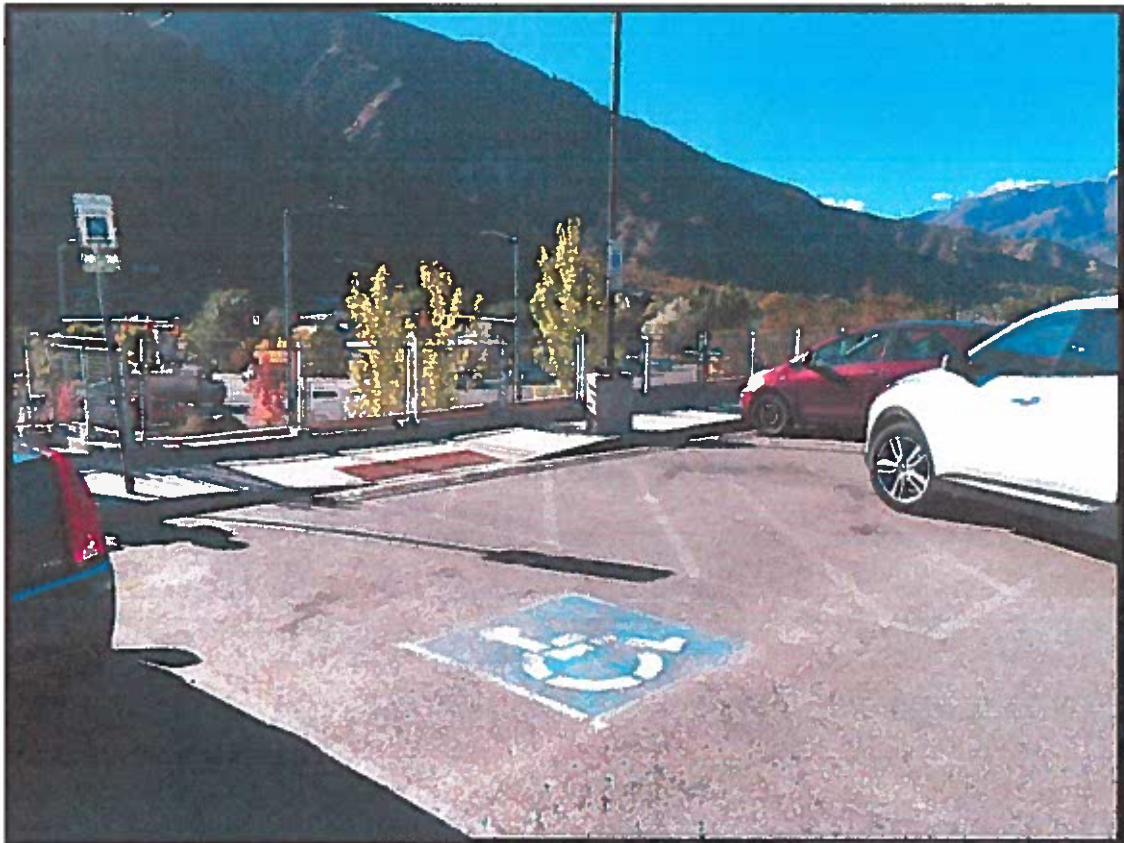
<i>Restrooms</i>	YES	NO
If restrooms provided, is there an accessible restroom (signage, doors pressure <5 lbs, toilet height, grab bars, accessible sink)? N/A	X	

COMMENTS: Public 'Family' Restroom available

<i>Local Connecting Transportation</i>	YES	NO
Is public transportation available? RFTA (Roaring Fork Trans. Authority) BRT, RFTA Local, Ride Glenwood Springs	X	
Local bus stop less than 1/4 mile to Bustang loading area?	X	
Is route from local bus stop to Bustang stop accessible?	X	

<i>Other</i>	YES	NO
Ticket counter accessible (if provided)? No higher than 36". N/A - pay on bus	-	
Rider information (schedules, fares, etc.) properly displayed and available in large print or alternate format? Didn't see ride information displayed at stop		X

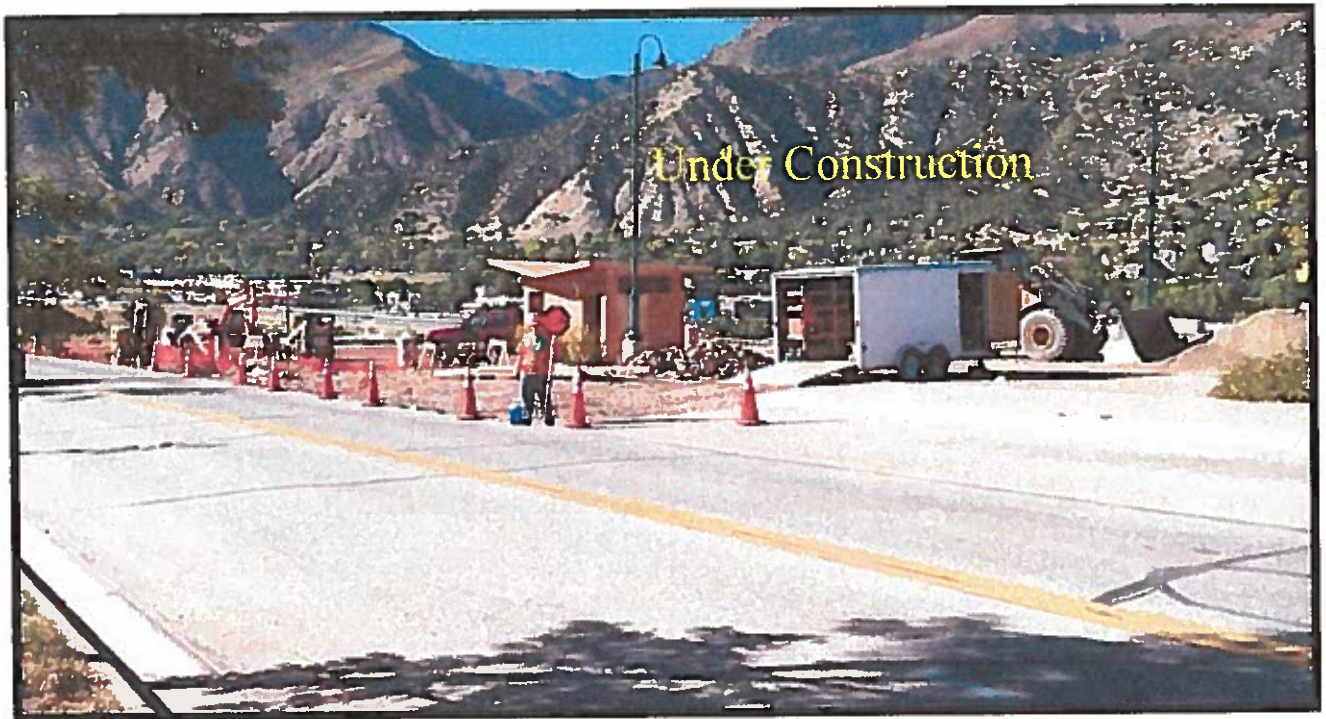






Similar restroom available to the public





Bustang ADA Survey Checklist

Location: West Glenwood Park & Ride

Date: September 29, 2016

Survey Conducted By: Patrick Going, ADA Consultant

<i>Parking & Drop-Off Area</i> No Parking Specifically for Bustang Provided	-	-
--	---	---

COMMENTS: All Park and Ride parking also available to Bustang. BUT note: this whole area is under construction.

<i>Exterior Path-of-Travel to Bustang Loading Area</i>	YES	NO
<i>Is the walkway to the bus loading area paved, relatively flat, and free of abrupt edges or breaks in the surface? Will be once construction finalized</i>	X	
<i>Are all curbs along walkway ramped?</i>	X	
<i>Are stairs or steps along the walkway either ramped or have alternative means of access (e.g. elevator)?</i>	X	
<i>Is the walkway/hallway 36" minimum width and free of protrusions or overhanging obstacles?</i>	X	

COMMENTS: Like all the Bustang stops, larger signs are recommended.

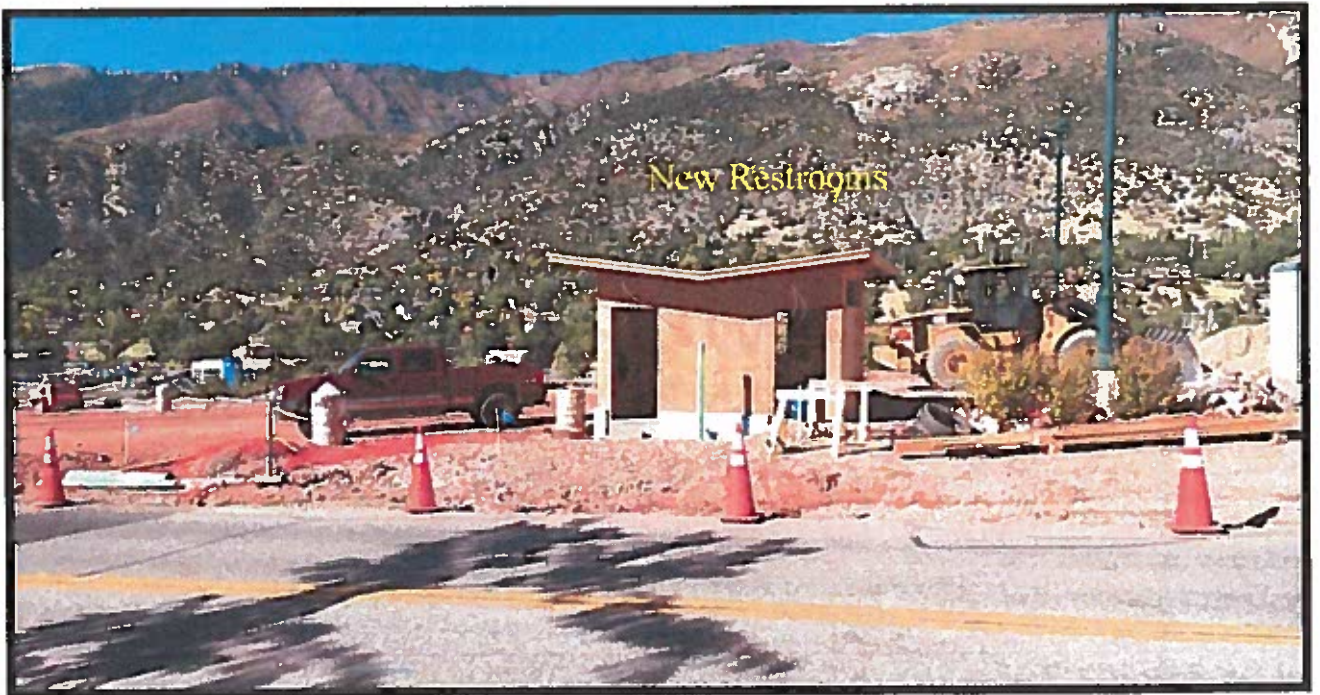
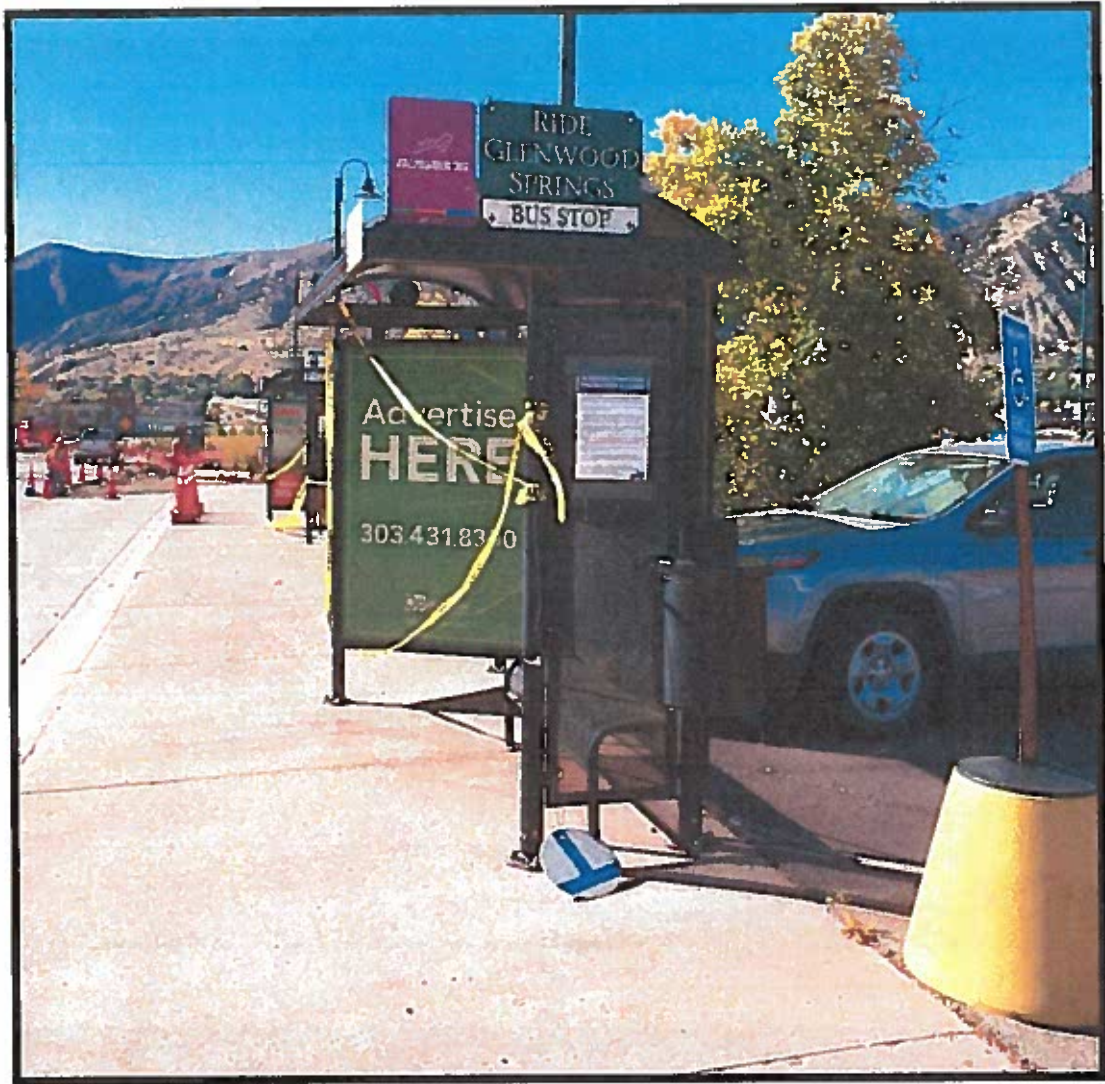
<i>Bustang Bus Waiting Shelter</i>	YES	NO
<i>Is the shelter on an accessible route with adequate clearance to enter and accessible benches (if provided). Once construction is complete, should be good.</i>	X	

<i>Restrooms</i>	YES	NO
<i>If restrooms provided, is there an accessible restroom (signage, doors pressure <5 lbs, toilet height, grab bars, accessible sink)? (Under construction)</i>	X	

COMMENTS: New Restrooms Under Construction

<i>Local Connecting Transportation</i>	YES	NO
<i>Is public transportation available? RFTA Local, Ride Glenwood Springs</i>	X	
<i>Local bus stop less than 1/4 mile to Bustang loading area?</i>	X	
<i>Is route from local bus stop to Bustang stop accessible? (Will be once construction complete)</i>	X	

<i>Other</i>	YES	NO
<i>Ticket counter accessible (if provided)? No higher than 36". N/A - pay on bus</i>	-	
<i>Rider information (schedules, fares, etc.) properly displayed and available in large print or alternate format? Won't know until construction is complete</i>	-	







Bustang ADA Survey Checklist

Location: Eagle Chambers Park and Ride
Date: September 28, 2016
Survey Conducted By: Patrick Going, ADA Consultant

Parking & Drop-Off Area No Parking Specifically for Bustang Provided	-	-
---	---	---

COMMENTS: There is a nearby parking area on north end with five spaces for customers of Loaf & Jug. Not available long-term.

<i>Exterior Path-of-Travel to Bustang Loading Area</i>	YES	NO
<i>Is the walkway to the bus loading area paved, relatively flat, and free of abrupt edges or breaks in the surface?</i>	X	
<i>Are all curbs along walkway ramped?</i>	X	
<i>Are stairs or steps along the walkway either ramped or have alternative means of access (e.g. elevator)?</i>	X	
<i>Is the walkway/hallway 36" minimum width and free of protrusions or overhanging obstacles?</i>	X	

COMMENTS: Like all the Bustang stops, larger signs are recommended.

<i>Bustang Bus Waiting Shelter</i>	YES	NO
<i>Is the shelter on an accessible route with adequate clearance to enter and accessible benches (if provided).</i>	X	

<i>Restrooms</i>	YES	NO
<i>If restrooms provided, is there an accessible restroom (signage, doors pressure <5 lbs, toilet height, grab bars, accessible sink)? No restrooms specifically for Bustang or local transportation buses.</i>	-	

COMMENTS: Restrooms are available at nearby Loaf & Jug convenience store.

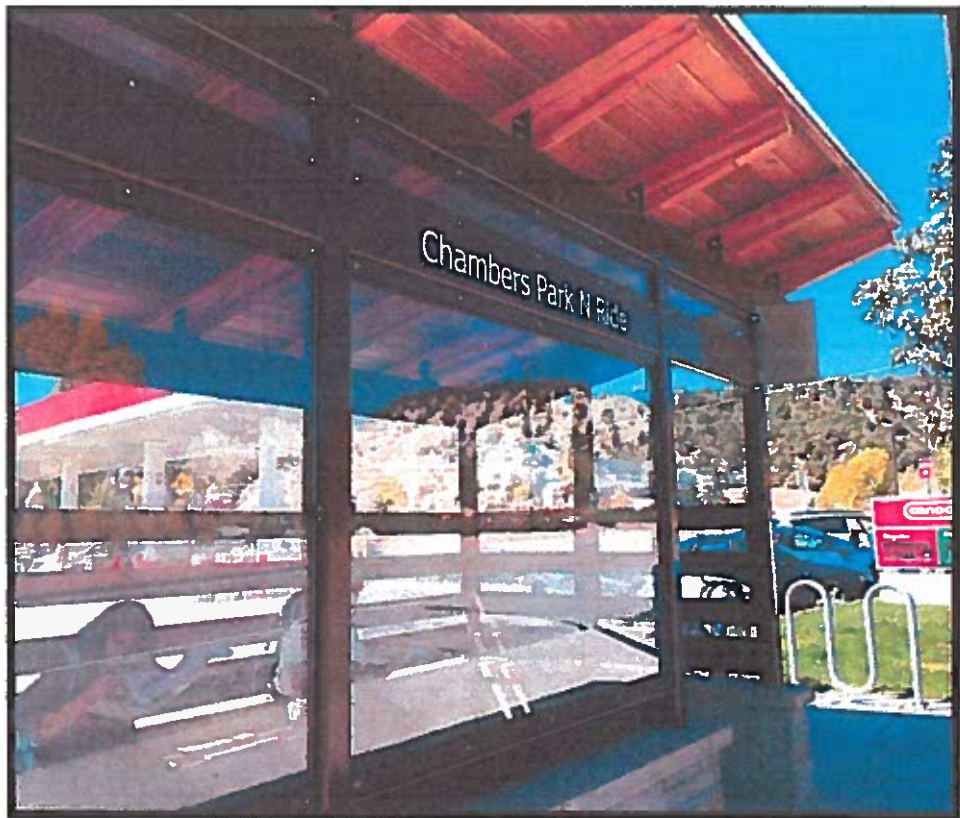
<i>Local Connecting Transportation</i>	YES	NO
<i>Is public transportation available? ECO Transit</i>	X	
<i>Local bus stop less than 1/4 mile to Bustang loading area?</i>	X	
<i>Is route from local bus stop to Bustang stop accessible? (Will be once construction complete)</i>	X	

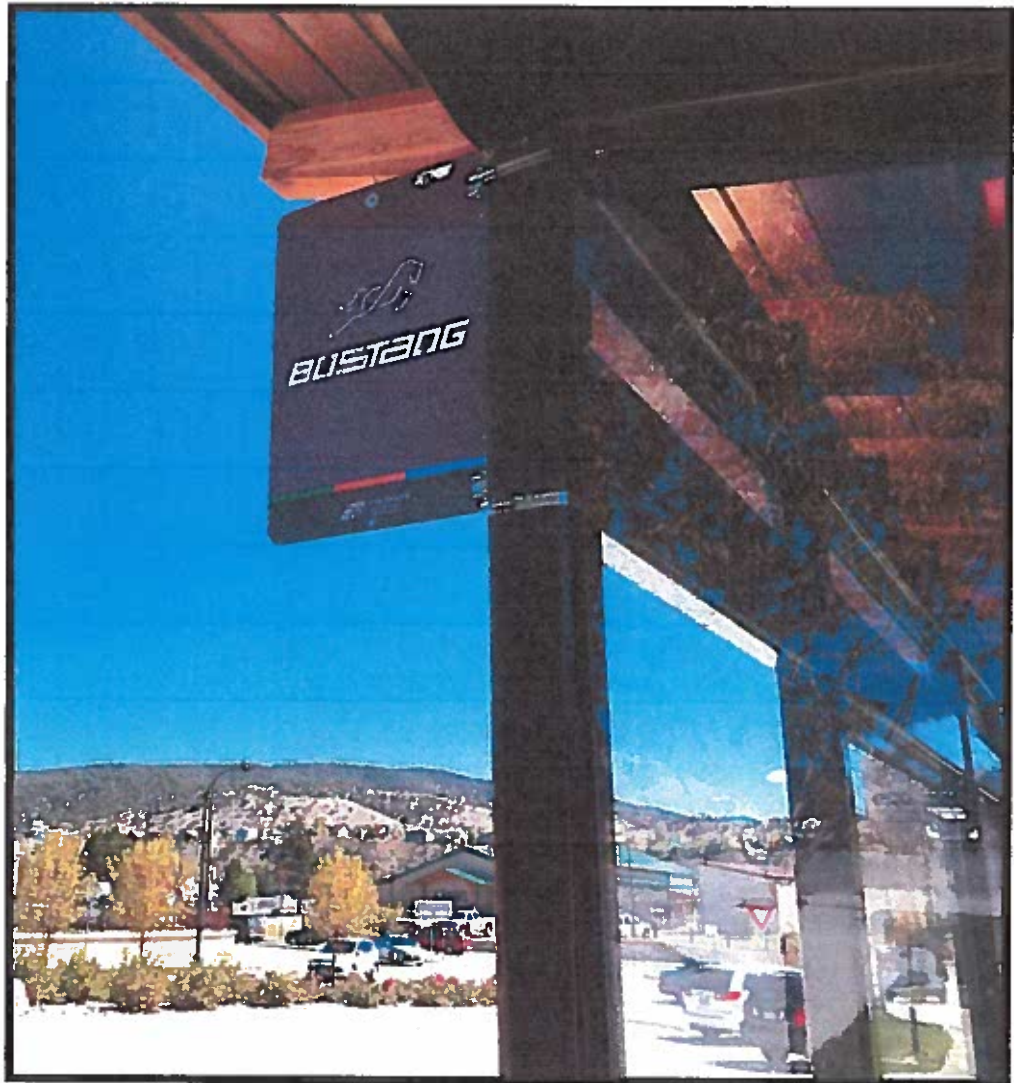
<i>Other</i>	YES	NO
<i>Ticket counter accessible (if provided)? No higher than 36". N/A - pay on bus</i>	-	
<i>Rider information (schedules, fares, etc.) properly displayed and available in large print or alternate format? Schedule was not on display in bus shelter</i>	-	



**Believe all this parking only for customers
of Loaf & Jug.**

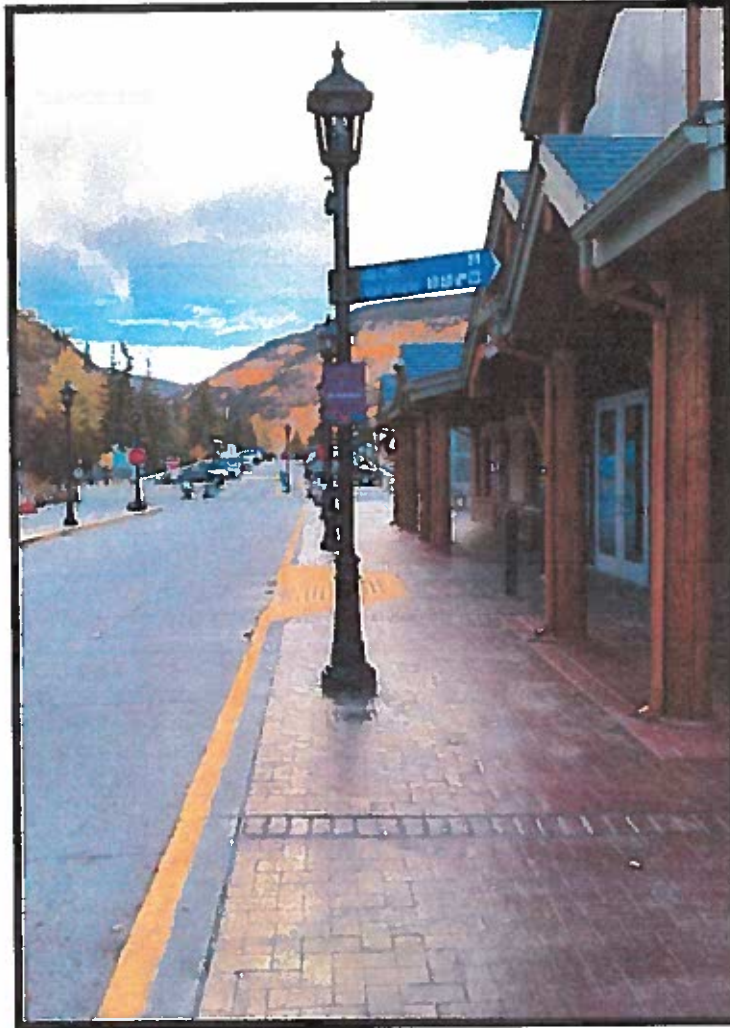






Suggest a larger sign to ID Bustang stop





Bustang ADA Survey Checklist

Location: Vail Transportation Center

Date: September 29, 2016

Survey Conducted By: Patrick Going, ADA Consultant

<i>Parking & Drop-Off Area</i> No Parking Specifically for Bustang Provided	-	-
--	---	---

COMMENTS: *There are several public parking lots available.*

<i>Exterior Path-of-Travel to Bustang Loading Area</i>	YES	NO
<i>Is the walkway to the bus loading area paved, relatively flat, and free of abrupt edges or breaks in the surface?</i>	X	
<i>Are all curbs along walkway ramped?</i>	X	
<i>Are stairs or steps along the walkway either ramped or have alternative means of access (e.g. elevator)?</i>	X	
<i>Is the walkway/hallway 36" minimum width and free of protrusions or overhanging obstacles?</i>	X	

COMMENTS: Like all the Bustang stops, larger signs are recommended.

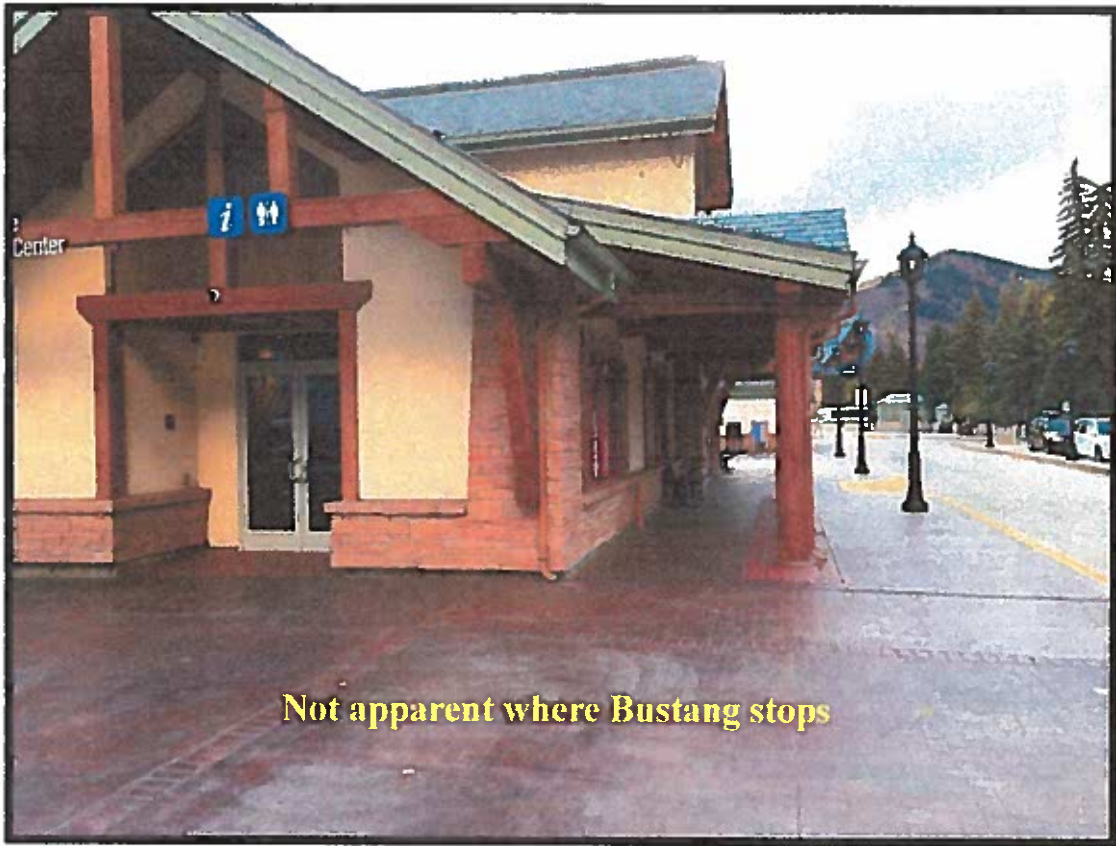
<i>Bustang Bus Waiting Shelter</i>	YES	NO
<i>Is the shelter on an accessible route with adequate clearance to enter and accessible benches (if provided).</i>	X	

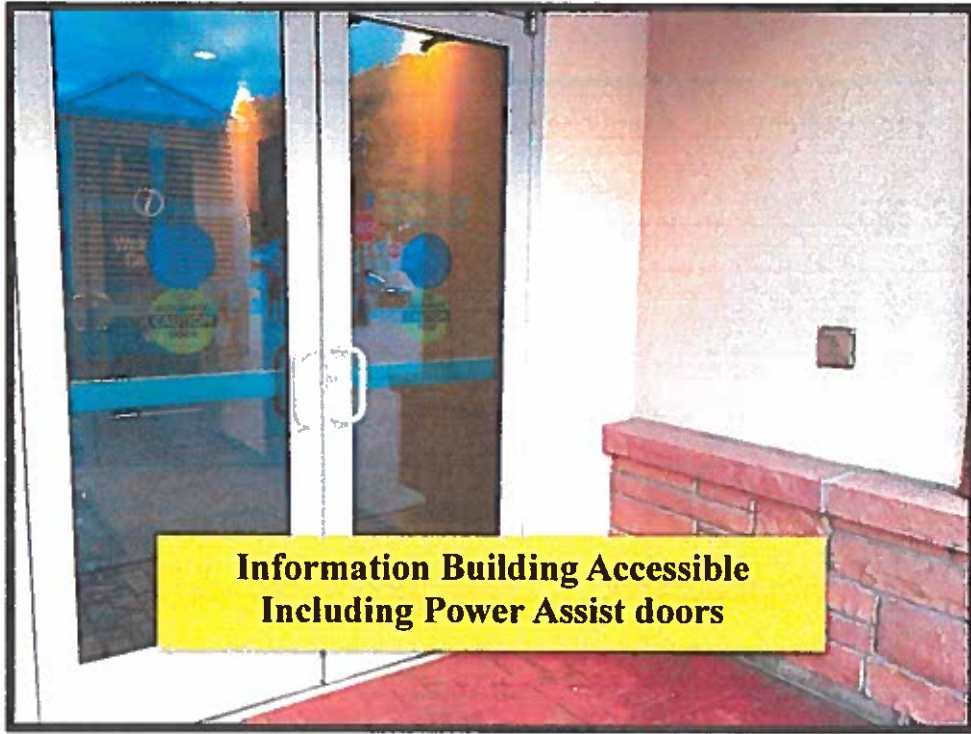
<i>Restrooms</i>	YES	NO
<i>If restrooms provided, is there an accessible restroom (signage, doors pressure <5 lbs, toilet height, grab bars, accessible sink)? No restrooms specifically for Bustang. Vail Information/Visitor Building provides restrooms.</i>	-	

COMMENTS: Restrooms available in Information building.

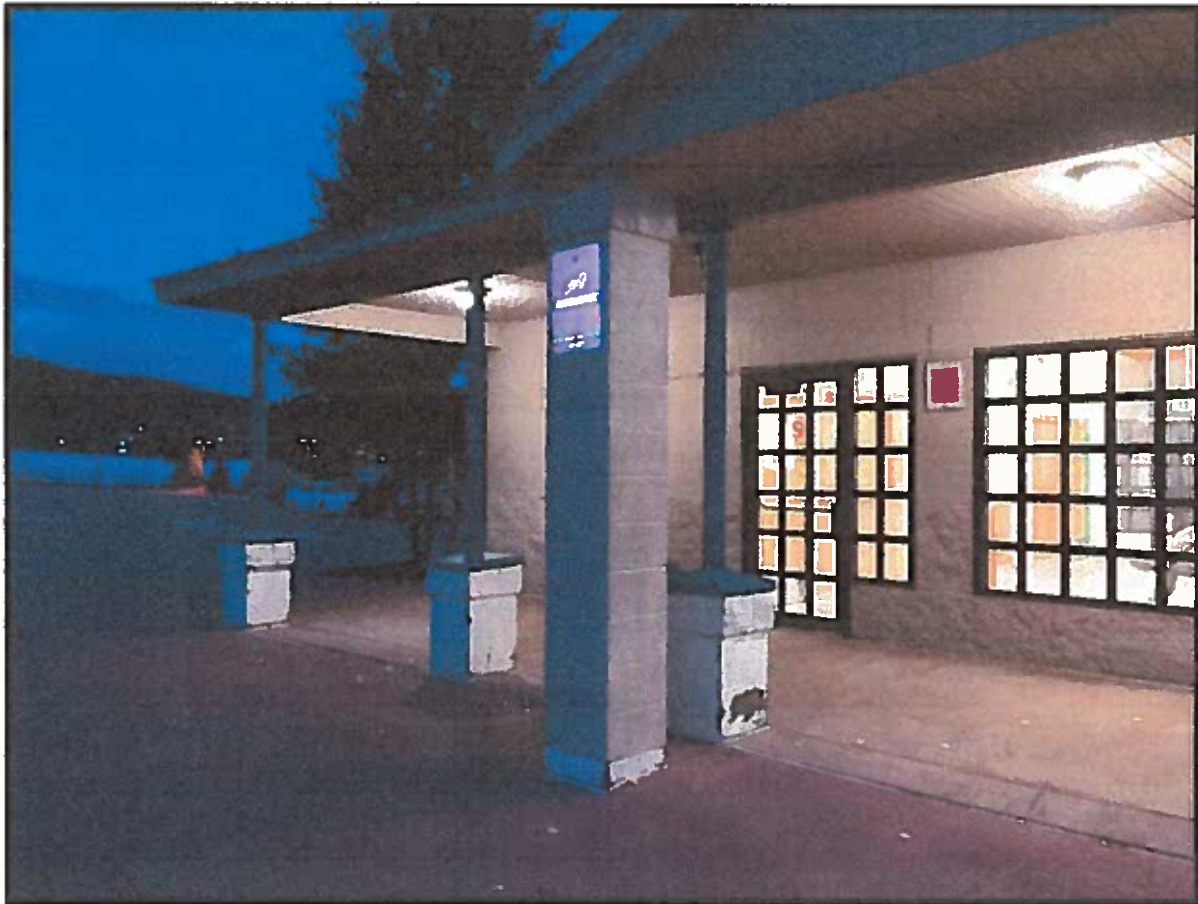
<i>Local Connecting Transportation</i>	YES	NO
<i>Is public transportation available? Vail Transit, ECO Transit, Greyhound</i>	X	
<i>Local bus stop less than 1/4 mile to Bustang loading area?</i>	X	
<i>Is route from local bus stop to Bustang stop accessible? (Will be once construction complete)</i>	X	

<i>Other</i>	YES	NO
<i>Ticket counter accessible (if provided)? No higher than 36". N/A - pay on bus</i>	-	
<i>Rider information (schedules, fares, etc.) properly displayed and available in large print or alternate format? No schedule displayed at outside Bustang stop.</i>	-	





**Information Building Accessible
Including Power Assist doors**



Bustang ADA Survey Checklist

Location: Frisco Transfer Center

Date: September 29, 2016

Survey Conducted By: Patrick Going, ADA Consultant

<i>Parking & Drop-Off Area</i> No Parking Specifically for Bustang Provided	-	-
--	---	---

COMMENTS: *This is a large transportation hub with a very large parking lot.*

<i>Exterior Path-of-Travel to Bustang Loading Area</i>	YES	NO
<i>Is the walkway to the bus loading area paved, relatively flat, and free of abrupt edges or breaks in the surface?</i>	X	
<i>Are all curbs along walkway ramped?</i>	X	
<i>Are stairs or steps along the walkway either ramped or have alternative means of access (e.g. elevator)?</i>	X	
<i>Is the walkway/hallway 36" minimum width and free of protrusions or overhanging obstacles?</i>	X	

COMMENTS: Like all the Bustang stops, larger signs are recommended. It was difficult to locate this Bustang stop in the evening.

<i>Bustang Bus Waiting Shelter</i>	YES	NO
<i>Is the shelter on an accessible route with adequate clearance to enter and accessible benches (if provided). Adjacent to the Bustang stop is a large, comfortable building with restrooms, vending, etc.</i>	X	

<i>Restrooms</i>	YES	NO
<i>If restrooms provided, is there an accessible restroom (signage, doors pressure <5 lbs, toilet height, grab bars, accessible sink)? No restrooms specifically for Bustang. Building nearby serving Greyhound and other buses did have restrooms.</i>	-	

<i>Local Connecting Transportation</i>	YES	NO
<i>Is public transportation available? Summit Stage, Greyhound</i>	X	
<i>Local bus stop less than 1/4 mile to Bustang loading area?</i>	X	
<i>Is route from local bus stop to Bustang stop accessible? (Will be once construction complete)</i>	X	

<i>Other</i>	YES	NO
<i>Ticket counter accessible (if provided)? No higher than 36". N/A - pay on bus</i>	-	
<i>Rider information (schedules, fares, etc.) properly displayed and available in large print or alternate format? No schedule displayed at outside Bustang stop.</i>	-	







Bustang ADA Survey Checklist

Location: RTD - Denver Federal Center

Date: September 13, 2016

Survey Conducted By: Patrick Going, ADA Consultant

<i>Parking & Drop-Off Area</i> No Parking Specifically for Bustang Provided	-	-
--	---	---

COMMENTS: This is a large parking area that is well designed and constructed. Adequate accessible parking is available.

<i>Exterior Path-of-Travel to Bustang Loading Area</i>	YES	NO
<i>Is the walkway to the bus loading area paved, relatively flat, and free of abrupt edges or breaks in the surface?</i>	X	
<i>Are all curbs along walkway ramped?</i>	X	
<i>Are stairs or steps along the walkway either ramped or have alternative means of access (e.g. elevator)?</i>	X	
<i>Is the walkway/hallway 36" minimum width and free of protrusions or overhanging obstacles?</i>	X	

COMMENTS: Like all the Bustang stops, larger signs are recommended.

<i>Bustang Bus Waiting Shelter</i>	YES	NO
<i>Is the shelter on an accessible route with adequate clearance to enter and accessible benches (if provided).</i>	X	

<i>Restrooms</i>	YES	NO
<i>If restrooms provided, is there an accessible restroom (signage, doors pressure <5 lbs, toilet height, grab bars, accessible sink)?</i> No restrooms available.	-	

<i>Local Connecting Transportation</i>	YES	NO
<i>Is public transportation available? RTD - Regional Transportation District</i>	X	
<i>Local bus stop less than 1/4 mile to Bustang loading area?</i>	X	
<i>Is route from local bus stop to Bustang stop accessible? (Will be once construction complete)</i>	X	

<i>Other</i>	YES	NO
<i>Ticket counter accessible (if provided)? No higher than 36".</i> N/A - pay on bus	-	
<i>Rider information (schedules, fares, etc.) properly displayed and available in large print or alternate format? No schedule displayed at outside Bustang stop.</i>	-	



Larger Sign Recommended



Good accessible parking and access route to Bustang stop

